

SCCCW 2023 CONVENTION @ LANDMARK RESORT

BOOK AT THE DISCOUNTED RATE TO SAVE \$\$\$
IF NOT GUESTS WILL PAY THE BEST AVAILABLE RATE

Phone # to Call to Make Reservations: **855-338-0226**

Group Reservation Hours: Monday through Friday 9am – 9pm -- Saturday & Sunday 9am-5pm

Group Name: SC Council of Catholic Women

Group Reference #: 3671327

Group Cut-off Date: **February 3rd 2023**

(Discounted group rates will no longer be available after the cut-off date, and guests will have to book at the Best Available Rate. Please encourage your group to book their reservation(s) as soon as possible. Thanks!)



Landmark Resort

www.landmarkresort.com

1501 S Ocean Blvd

Myrtle Beach, SC 29577

Oceanfront/ Ocean View /Interior Guest Rooms
17 Water Amenities including huge Indoor /Outdoor Pool complex
Brand New Waterpark with 3 Four Story Water Slides & Splash Zone
Gazebo Restaurant serving breakfast buffet
Latitudes Lounge serving lunch and dinner
Starbucks located in the lobby
Room Information
~Rates~

March 2nd – March 5th 2023

(per day)

A One Time \$7 Booking Fee Will Be Added to The First Nights Stay
We Have Lowered Our Daily Resort Fee For This Group
Complimentary Parking In Our Parking Garage - Complimentary In Room Wi-Fi

Each reservation is to be reserved with your personal credit card.

Interior Guest Room - The room comes with two double beds, a wet bar, microwave and a mini fridge. Plus, a private balcony overlooking the interior courtyard.

The maximum occupancy for this unit is four (4) people.

Discounted Weekday Rate: \$70 + Fees + Tax = \$99.44 per night

Discounted Weekend Rate: \$79 + Fees + Tax = \$109.61 per night



Ocean View Room- Equipped with two double beds. Plus room amenities that include a mini fridge, microwave, coffee maker, and a wet bar area with a sink.

The ocean view units have a private balcony with a northerly view of the Myrtle Beach coastline.

The maximum occupancy for this unit is four (4) people.

Discounted Weekday Rate: \$72 + Fees + Tax = \$101.70 per night

Discounted Weekend Rate: \$83 + Fees + Tax = \$114.13 per night



Oceanfront Standard Room - two double beds with a private balcony that faces the ocean. This unit also has a wet bar, mini refrigerator and a microwave.

The maximum occupancy for this unit is four (4) people.

Discounted Weekday Rate: \$86 + Fees + Tax = \$117.52 per night

Discounted Weekend Rate: \$100 + Fees + Tax = \$133.34 per night



Oceanfront Executive Suite – An oceanfront bedroom with two double beds. In the living room, there is a double pull down wall bed for extra sleeping space, a sofa and a TV. A full kitchen with a full-sized refrigerator, a stove, microwave, coffee maker as well as basic dinnerware and cookware. Plus, a private oceanfront balcony off the living room.

The maximum occupancy for this unit is six (6) people.

Discounted Weekday Rate: \$92 + Fees + Tax = \$124.30 per night

Discounted Weekend Rate: \$125 + Fees + Tax = \$161.59 per night



Angle Oceanfront Executive King Suite – Offers a living room, bedroom and kitchen. The bedroom in this suite features a king size bed, while the living room offers comfortable double wall bed, sofa, fully equipped kitchen with dining table with chairs and a side view private balcony.

The maximum occupancy for this unit is four (4) people.

Discounted Weekday Rate: \$75 + Fees + Tax = \$105.09 per night

Discounted Weekend Rate: \$105 + Fees + Tax = \$138.99 per night



King Oceanfront Executive Suite- One bedroom with a king-sized bed. A living room, with a folding wall bed and a sofa. A full kitchen with a refrigerator, stove, microwave, coffee maker as well as basic cookware. An oceanfront balcony.

The maximum occupancy for this unit is four (4) people.

Discounted Weekday Rate: \$88 + Fees + Tax = \$119.78 per night

Discounted Weekend Rate: \$129 + Fees + Tax = \$166.11 per night



Oceanfront Efficiency- The Oceanfront Efficiency, one king bed in guest rooms. A sleeper sofa and an efficiency kitchen, with a cooktop, microwave and full refrigerator. Plus, an oceanfront balcony.

The maximum occupancy for this unit is four (4) people.

Discounted Weekday Rate: \$123 + Fees + Tax = \$159.33 per night

Discounted Weekend Rate: \$129 + Fees + Tax = \$166.11 per night



Oceanfront King Room- A king sized bed and as well as a private balcony that faces the ocean. The Oceanfront King Rooms come equipped with a wet bar featuring a small refrigerator and microwave.

The maximum occupancy for this unit is four (4) people.

Discounted Weekday Rate: \$83 + Fees + Tax = \$114.13 per night

Discounted Weekend Rate: \$93 + Fees + Tax = \$125.43 per night

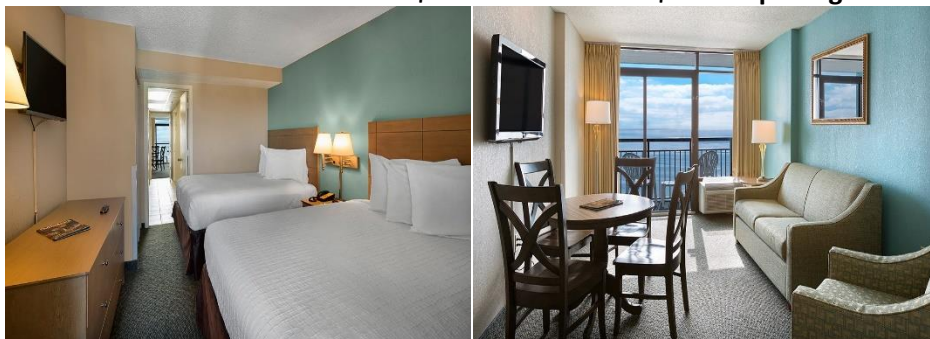


Deluxe Oceanfront Executive Suite- The suite is equipped with a bedroom with two double beds and a fully equipped kitchen with a refrigerator, microwave, stove, and basic cookware/dinnerware, as well as complimentary in-room coffee. An oceanfront living room has a double murphy bed, sofa, as well as the sliding glass doors to the oceanfront balcony.

The maximum occupancy for this unit is six people.

Discounted Weekday Rate: \$81 + Fees + Tax = \$111.87 per night

Discounted Weekend Rate: \$135 + Fees + Tax = \$172.89 per night



Deluxe King Oceanfront Executive Suite- features a king bed and television in the bedroom, a full-sized kitchen, one and a half baths and your own private balcony

facing the ocean complete with two patio chairs. The living room has extra sleeping space with the fold out wall bed.

The maximum occupancy for this unit is four people.

Discounted Weekday Rate: \$105 + Fees + Tax = \$138.99 per night

Discounted Weekend Rate: \$139 + Fees + Tax = \$177.41 per night



Deluxe Angle Oceanfront Executive Suite- In this suite the bedroom has two double beds and the living room has a sofa, dining table, a second TV and a pull-out double bed. Also featured in this suite is a full kitchen with a stove, full refrigerator and cooking utensils. This suite comes with its two private balconies.

The maximum occupancy for this unit is six people.

Discounted Weekday Rate: \$84 + Fees + Tax = \$115.26 per night

Discounted Weekend Rate: \$110 + Fees + Tax = \$144.64 per night



*Upon Calling in Breakfast Can Be Purchased for \$12.95 Not Including Gratuity Per Adult per Morning

*It Is a Full Breakfast Buffet, Coffee & Juice Is Included. Plus, A Waffle Station

*Rates Are Based on Single/Double Occupancy, Additional Fees May Apply